

## 专业制造蜗轮箱、阀门手动装置

Professional manufacture of worm gear box and valve manual device.



公司产品设计采用二维与三维结合的设计方式，以实现产品的可靠性和经济性。

The company adopts the product design concept with combination of 2D and 3D, to achieve the reliability and economy of products.



所有产品毛坯在进入生产前做材料理化性能测试，保证最终产品的可靠性。

Before sending to machining, all castings will be tested in chemical composition and mechanical property, to ensure the reliability of the products.

在成品最终交付客户前，做测试，以保证成品的技术数据。

Before delivery to customers, all products are subject to functional test, to ensure the technical data of the finished products.





WG系列阀门手动蜗轮装置使用于蝶阀，球阀等直角行程的阀门及其它类似设备。

WGseries valve manual worm gearboxes are used for quarter-turn valves, such as butterfly valves and ball valves and other similar products.

WG系列阀门手动蜗轮装置具有高强度，高传动效率的设计特点，可靠的应用于各种工作环境。

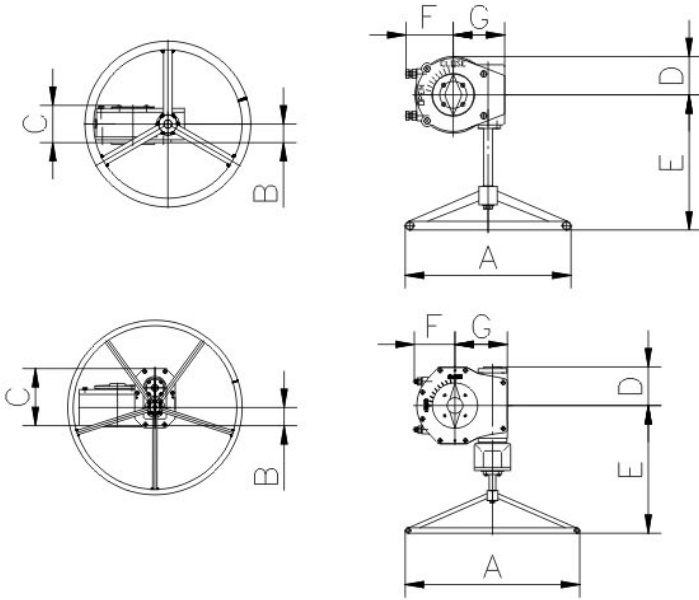
WGseries valve manual worm gearboxes have unique design features of high strength and high transmission efficiency, can be reliably used in various working conditions

该系列产品输出扭矩从270N.m 到370000N.m，分为28个规格成品，能更好的匹配不同规格阀门，可以手动操作，也可以与多加回转驱动装置组成自动控制机构使用。

Output torque of this series products ranges from 270.m to 370000 N.m,divied into 28 Kinds of modes .the products can match with differnt size/class of valves.the products can be used as manual operator,also can combine with electrical devices to be used as automatical control device.

该系列产品可扩展安装行程位置开关和位置电位器，用于传递阀门位置的电信号。

Thus series products also canbe instsllled with limit switches and positioners,used to transmit the electric signals of the valve position.



性能参数 Performance parameters						
型号 Model	最大输出扭矩 Output torque	速比 Ratio	最大输入扭矩 Input torque	最大轴孔深入 Hole dimension	效率 Mechanical Efficiency	90° 时输入圈数 NO.of turns for input when 90°
WG-0	270N.m	37:1	27N.m	φ 28*42	27±3%	9.5
WG-1	700N.m	30:1	86N.m	φ 35*60	27±3%	7.5
WG-2	1200N.m	50:1	89N.m	φ 50*70	27±3%	12.5
WG-3	1500N.m	58:1	96N.m	φ 55*80	27±3%	14.5
WG-4	2000N.m	68:1	118N.m	φ 55*98	25±3%	17
WG-5	2500N.m	80:1	125N.m	φ 60*100	25±3%	20
WG-6	3500N.m	68:1	208N.m	φ 60*100	25±3%	17
WG-7	4500N.m	78:1	252N.m	φ 80*105	25±3%	19.5
WG-8	6500N.m	192.5:1	154N.m	φ 80*105	22±3%	48.5
WG-9	8800N.m	226.9:1	178N.m	φ 80*105	22±3%	57
WG-10	10000N.m	267.1:1	172N.m	φ 90*130	22±3%	67
WG-11	13200N.m	291.9:1	210N.m	φ 100*135	22±3%	73
WG-12	18000N.m	569.6:1	167N.m	φ 120*170	19±3%	143
WG-13A	23000N.m	614:1	200N.m	φ 120*190	19±3%	154
WG-13	27000N.m	711:1	200N.m	φ 120*190	19±3%	178
WG-14	34000N.m	742:1	242N.m	φ 140*220	19±3%	186
WG-15	38600N.m	962.2:1	212N.m	φ 140*220	19±3%	241
WG-16	46000N.m	1576:1	172N.m	φ 140*220	17±3%	395
WG-16A	58000N.m	1889:1	205N.m	φ 140*220	15±2%	473
WG-17	66800N.m	2283.6:1	196N.m	φ 160*240	15±2%	571
WG-18	75000N.m	2310:1	232N.m	φ 160*280	14±2%	578
WG-18A	88000N.m	2853.5:1	222N.m	φ 160*280	14±2%	714
WG-19A	100000N.m	2900:1	268N.m	φ 220*330	14±2%	725
WG-19	128000N.m	3648.4:1	320N.m	φ 220*330	11±2%	912
WG-20A	158000N.m	4659.8:1	309N.m	φ 240*380	11±2%	1165
WG-20	208800N.m	5493:1	346N.m	φ 240*380	11±2%	1374
WG-21	301800N.m	8385:1	358N.m	φ 240*380	10±2%	2097
WG-22	368000N.m	11817.4:1	347N.m	φ 240*380	9±2%	2955

外形数据Outline data									
型号 Model	阀门安装法兰 Mounting pad	手轮直径A Handwheel A	B	C	D	E	F	G	重量 (Kg) Weight (KG)
WG-0	F07/F10	φ 200	30	60	48	174	80	67	4
WG-1	F10/F12	φ 300	46	90	78	260	93	103	9.5
WG-2	F12/F14	φ 380	43	97	83	317	103	123	12.5
WG-3	F14/F16	φ 380	60	110	92	284	105	126	15
WG-4	F14/F16	φ 480	54	122	116	341	113	144	23.5
WG-5	F14/F16	φ 480	55	122	117	328	140	150	31.5
WG-6	F14/F16/F25	φ 480	55	126	125	330	113	157	39
WG-7	F16/F25	φ 600	50	138	150	350	170	185	48
WG-8	F25	φ 600	151	205	150	470	170	185	63
WG-9	F25	φ 700	151	265	150	520	170	185	70
WG-10	F25	φ 750	197	280	173	490	185	249	80
WG-11	F25/F30	φ 700	191	280	175	525	180	265	88
WG-12	F25/F30	φ 750	173	265	207	570	205	255	124
WG-13A	F30	φ 800	110	300	230	640	210	320	175
WG-13	F30	φ 800	110	300	230	640	210	320	185
WG-14	F35	φ 800	203	305	240	685	260	330	245
WG-15	F35	φ 800	203	305	240	745	260	375	260
WG-16	F35	φ 800	203	305	240	785	260	390	300
WG-16A	F35	φ 900	203	305	240	785	260	390	315
WG-17	F35/F40	φ 900	210	335	300	790	290	350	375
WG-18	F40	φ 900	265	460	300	871	358	382	450
WG-18A	F40	φ 900	265	460	300	871	358	382	470
WG-19A	F48	φ 1000	300	449	360	927	340	550	800
WG-19	F48	φ 1000	300	449	360	1033	340	550	825
WG-20A	F60	φ 1000	300	449	360	1047	340	550	1300
WG-20	F60	φ 1000	174	460	460	1155	380	690	1350
WG-21	F60	φ 1200	207	464	460	1225	380	720	1480
WG-22	F60	φ 1200	207	464	460	1360	380	720	1580



输出轴上端安装的指针盘可以清晰的指示阀门位置

The position indicator installed at the top of the output shaft can clearly pointer show the position of valve

铸铁制成的蜗轮具有强度高，耐磨性好的特点

Made of cast iron,the wormgear has high strength and good wear resistance.

滚动轴承显著提高机构的传动效率  
Unique design with rolling bearing, can significantly improve the transmission efficiency of the device.

对于输出转矩较大的产品，在用于手动操作时，配置传动效率的齿轮变速箱，使操作更省力，轻便。

For the products with large output torque, using in manual operation,are designed and installed with ger transmission box, so the operation is moresmooth and easier

蜗轮箱及齿轮箱均采用高强度碳钢，各结合部位采用成型密封件个密封脂，箱体内存满足终身使用的密封脂，可以满足各种工况要求。  
The bodymaterial is high strength carbon steel. Die formed sealing parts and sealing grease are used for eachcombinging area.The sealing grease is filledinside the body that is enough for whole life of the gearbox,which can satisfy the requirements under different conditions.

蜗杆采用优质碳素钢，螺牙表面经高频淬火。  
Material of worm shaft is in quality carbon steel,thread surfaceistreated by high frequency quenching.

WG、SG系列阀门手动蜗轮装置由碳素钢蜗杆和球磨铸铁蜗轮组成的主体传动结构，箱体材料采用铸钢，具有高强度和高可靠性，全系列蜗杆两端装有滚动轴承，提高整机的传动效率。机构的各结合部位设置橡胶密封圈，能很好的防止内部润滑脂的泄露和外界灰尘与液体的侵入。

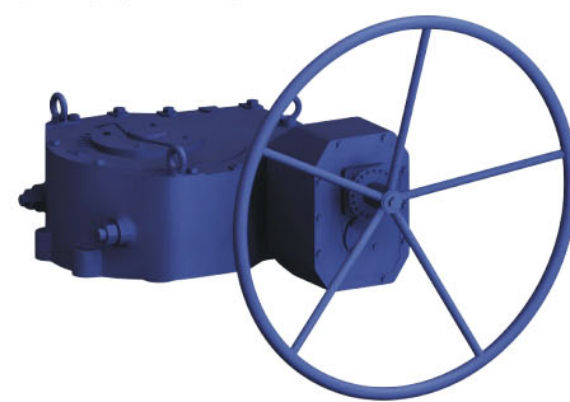
WG and SGseries valve manual gearboxes,is composed of carbon steel worm shaft and ductile iron wormgear and cast carbon steel body,which have high stenth and reliability. The two ends of worm shaft on all series are installed with rollingbearing to improve the transmission efficiency of the gearbox.die formed rubbersealing parts and sealing grease are used fot each combining atea on the body,to prevent internal grease leak and the ingress offoreign dirts and liquid.

输出扭矩大于4500N.m以上的产品配有多级直齿减速器。可以手动操作，也可以与多回转驱动装置组成自动控制机构使用。可扩展安装行程位置开关和位置电位器，用于传递阀门位置的电信号。

The products with output torque more than 4500 N.m are installed with a multi-speed reducer,can be used as manual operator.and also can combine with electric device to be used as automatic control device,also can be installed with limit switches and positioners used to transmit the electric signals of rhe valve position.



普通型 Common type



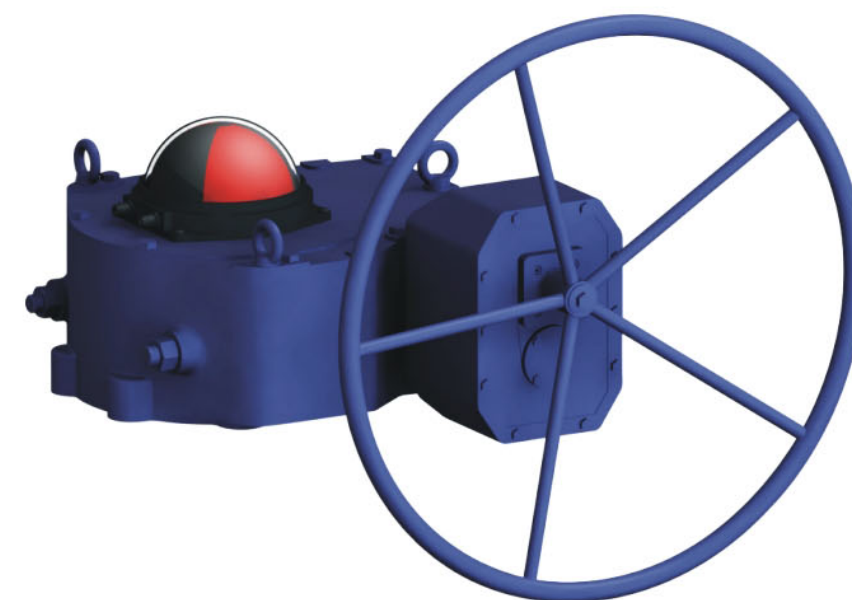
带锁型 Locking device type



链轮型 Chain wheel type



光杆型 Bare stem type



监控型 Monitoring type





SG系列阀门手动锥齿轮装置使用于闸阀，截止阀等直行程的阀门及其它类似设备。

SG series valve manual bevel gearboxes are used for gate valves, globe valves, and the valves with linear movement and other similar products.

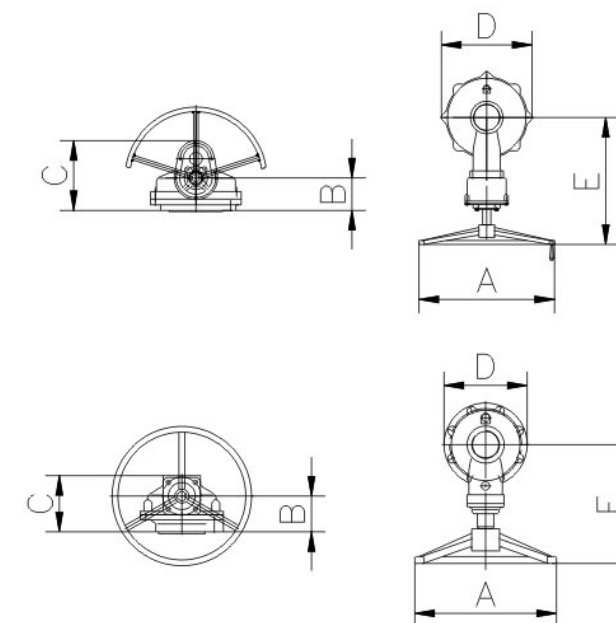
SG系列阀门手动锥齿轮装置具有体积小，重量轻的设计特点，可靠的应用于各种工作环境。

SG series valve manual bevel gearboxes have unique design features of small size, lightweight, can be used reliably in various working conditions.

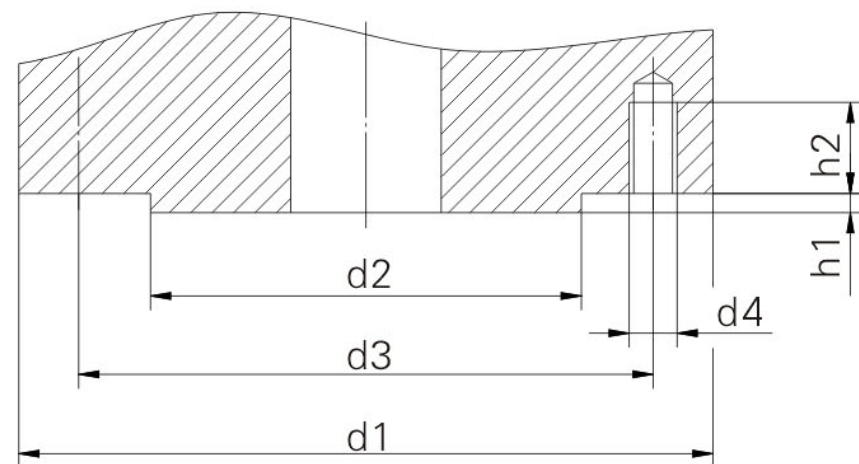
该系列产品输出扭矩从 200 N.m 到 88000 N.m，分为 19 个规格成品，能更好的匹配不同规格阀门，可以手动操作，也可以与多回转驱动装置组成自动控制机构使用。

Output torque of this series products ranges from 200 N.m to 88000 N.m, divided into 19 models, can match with different size/class of valves. The products can be used as manual operator, and also can combine with electric device to be used as automatic control device.

性能参数 Performance parameters						
型号 Model	最大输出扭矩 Output torque	最大承受推力 Max thrust	速比 Ratio	效率 Mechanical Efficiency	最大输入扭矩 Input torque	最大通过阀杆直径 MAX stem diameter
SG-000	200N.m	40K.N	4:1	85±3%	62N.m	φ 25
SG-00	400N.m	100K.N	3:1	85±3%	167N.m	φ 32
SG-00A	500N.m	100K.N	2.61:1	85±3%	240N.m	φ 42
SG-0	750N.m	150K.N	3.077:1	85±3%	305N.m	φ 45
SG-0A	1125N.m	180K.N	3.7:1	85±3%	380N.m	φ 45
SG-1	1500N.m	200K.N	4.1:1	85±3%	455N.m	φ 52
SG-1A	2250N.m	240K.N	11.07:1	62±3%	325N.m	φ 52
SG-2	3000N.m	450K.N	6:1	85±3%	625N.m	φ 70
SG-2A	4500N.m	450K.N	16.16:1	62±3%	450N.m	φ 70
SG-3	5000N.m	550K.N	18.97:1	62±3%	450N.m	φ 90
SG-3A	6800N.m	840K.N	21.56:1	62±3%	510N.m	φ 122
SG-3B	7800N.m	840K.N	32.02:1	62±3%	395N.m	φ 122
SG-3C	9000N.m	840K.N	45.33:1	62±3%	295N.m	φ 122
SG-4	12000N.m	1400K.N	44.07:1	62±3%	405N.m	φ 130
SG-4A	15000N.m	1400K.N	49.1:1	62±3%	495N.m	φ 130
SG-5	18800N.m	2400K.N	45.47:1	62±3%	665N.m	φ 130
SG-5A	28000N.m	2400K.N	88:1	62±3%	520N.m	φ 130
SG-5B	37800N.m	2900K.N	134.6:1	62±3%	460N.m	φ 145
SG-7	88000N.m	5000K.N	240.1:1	48±3%	770N.m	φ 175



外形数据 Outline data							
型号 Model	阀门安装法兰 Mounting pad	手轮直径A Handwheel A	B	C	D	E	重量 (Kg) Weight (KG)
SG-000	F10	φ 305	53	98	150	195	13.5
SG-00	F14	φ 305	80	125	178	240	17.5
SG-00A	F14	φ 400	85	140	190	264	25
SG-0	F16/F14	φ 460	92	150	218	287	28.5
SG-0A	F16/F14	φ 460	92	150	245	287	33
SG-1	F25	φ 460	100	170	287	340	49
SG-1A	F25	φ 610	100	260	287	471	66
SG-2	F30	φ 610	155	225	390	407	93
SG-2A	F30	φ 610	155	325	390	486	110
SG-3	F35	φ 610	177	330	406	548	126
SG-3A	F35/F40	φ 610	225	390	500	695	240
SG-3B	F35/F40	φ 800	225	390	500	695	250
SG-3C	F35/F40	φ 800	225	405	500	722	270
SG-4	F40	φ 1000	230	447	620	777	355
SG-4A	F40	φ 1000	230	460	620	800	380
SG-5	F48	φ 1200	230	460	620	800	398
SG-5A	F48	φ 1200	230	460	620	800	418
SG-5B	F48	φ 1200	238	545	620	915	494
SG-7	F60	φ 1200	310	620	735	1025	1150



法兰号 flange	尺寸Diounituiw						螺栓或螺 柱的数量 Q'ty of bolt/ stud
	d1	d2 ( h11 )	d3	d4	h2 <sub>max</sub>	h1 <sub>min</sub>	
F07	90	55	70	M8	12	3	4
F10	125	70	102	M10	15	3	4
F12	150	85	125	M12	18	3	4
F14	175	100	140	M16	24	4	4
F16	210	130	165	M20	30	5	4
F25	300	200	254	M16	24	5	8
F30	350	230	298	M20	30	5	8
F35	415	260	356	M30	45	5	8
F40	475	300	406	M36	54	8	8
F48	560	370	483	M36	54	8	12
F60	686	470	603	M36	54	8	20

## 部分回转订货数据表 Data table needed for order of quarter-turm gearbox

装置最大扭矩 Max torque of gearbox ( N.mm ) :

平台型号 Mounting Pad type:

其他平台 other mounting:

尺寸Diounituiw						螺栓或螺 柱的数量 Q'ty of bolt/ stud
d1	d2 ( h11 )	d3	d4	h1 <sub>min</sub>	h2 <sub>max</sub>	

输入端直径尺寸Diamemter of input side:

其它要求other requirements:

## 多回转订货数据表Data table needed for order of multi-turn gearbox

装置最大扭矩Maxtorque of gearbox ( N.mm ) : 装置最大推力Maxtorust of gearbox ( KN ) :

平台型号Mounting pad type:

其他平台other mounting pad:

尺寸Diounituiw						螺栓或螺 柱的数量 Q'ty of bolt/ stud
d1	d2 ( h11 )	d3	d4	h1 <sub>min</sub>	h2 <sub>max</sub>	

推力型输入端螺纹直径尺寸Input thread dimension of Thrust type gearbox:

扭矩型三爪牙嵌内外径尺寸IDandOD of3 claws of torque type:

其它要求other requirements: